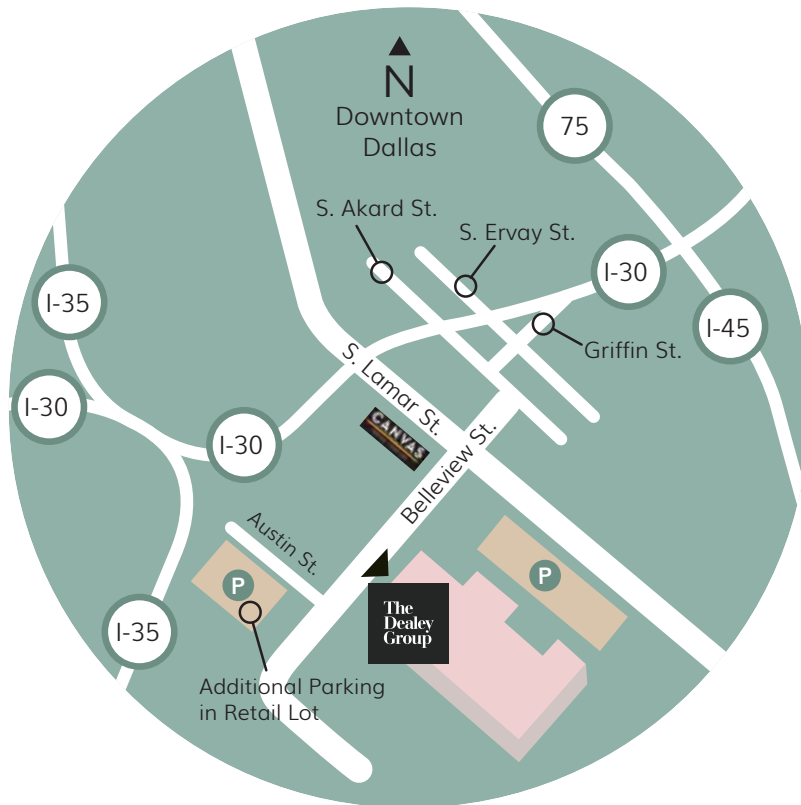
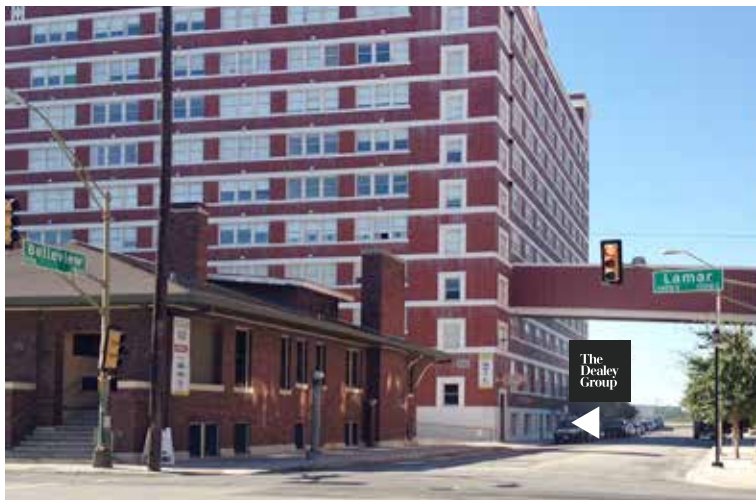


# How to find us



## Parking

- + The closest lot to our office is located on Austin St. (See Map)
- + Look for signs along Belleview St. for Opening Bell Coffee, Urban Market and The Dealey Group and enter building through the glass double doors
- + Once inside, walk straight ahead and take the first staircase on the right



## From DFW Airport (west of Dallas)

- + Take I-30 East to Dallas
- + Veer right to continue on I-30 East Texarkana
- + Exit 458, Lamar St./Griffin St.
- + Take the Lamar St. exit
- + Turn left onto Lamar St.
- + Turn right onto Belleview St.
- + TDG offices 200 meters down Belleview through the glass double doors on the left

## From east of Dallas

- + Take I-30 West to Dallas
- + Exit 45, Ervay St. (left exit)
- + You will merge to Griffin St.
- + Continue west on Griffin to Akard St.
- + Turn left onto Akard St.
- + Turn right onto Belleview St., crossing over Lamar St.
- + TDG offices 200 meters past Lamar through the glass double doors on the left

## From Love Field Airport

- + Take Mockingbird west to I-35
- + Take I-35 South
- + Veer right to exit 428A, I-30 East Texarkana
- + Exit 458, Lamar
- + Take the Lamar St. exit
- + Turn left onto Lamar St.
- + Turn right onto Belleview St.
- + TDG offices 200 meters down Belleview through the glass double doors on the left

## From U.S. Hwy 75 (northeast of Dallas)

- + Take U.S. Hwy 75 South
- + Exit 284A, I-30 West
- + Veer to "Exit Only, I-30 West"
- + Exit 45, Ervay St. (right exit)
- + You will merge to Griffin St.
- + Continue west on Griffin to Akard St.
- + Turn left onto Akard St.
- + Turn right onto Belleview St., crossing over Lamar St.
- + TDG offices 200 meters past Lamar through the glass double doors on the left

## From south of Dallas

- + Take I-35 North
- + Exit 427C, Industrial Blvd.
- + Continue through Industrial Blvd. onto Cadiz St.
- + Turn right onto Lamar St.
- + Turn right onto Belleview St.
- + TDG offices 200 meters down Belleview through the glass double doors on the left